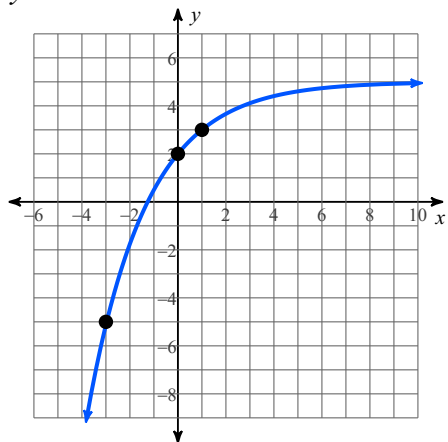


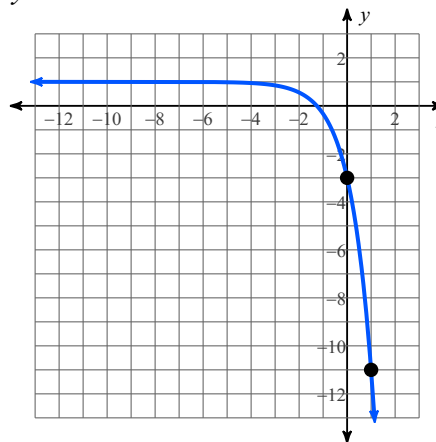
Week Twenty-Eight Homework

Use the  $x = 0$  and  $x = 1$  values to find the formula.  
Identify the type of curve.

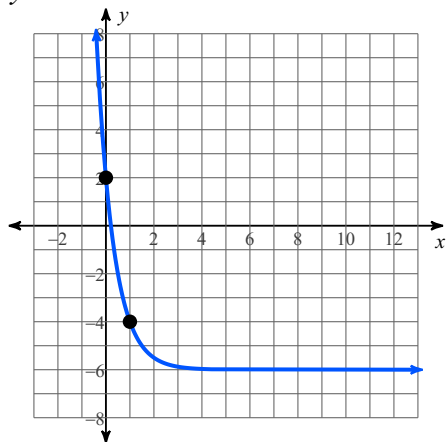
1)  $y =$



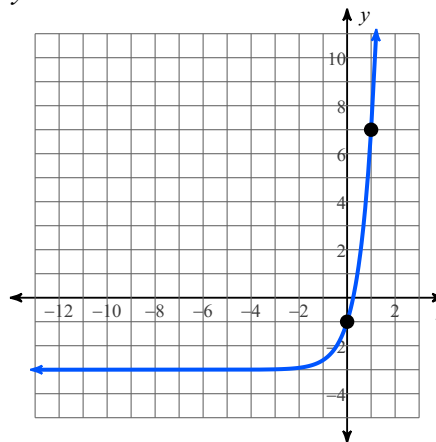
2)  $y =$



3)  $y =$



4)  $y =$



Find the **TOTAL AMOUNT** for each money item using  $A = p(r + 1)^t$ .

5) Brody opened a savings account with a \$1500 deposit. If it earns 1.35% interest, what is it worth in three years?

6) Fredy borrowed \$3175 a  $6\frac{1}{4}\%$  rate. How much will he owe after five years?

7) Karlo's mutual fund earns an average of 11.3% interest every year. Since he placed \$25,000 in the fund ten years ago, what is it worth today?

8) Lilly's credit card has a balance of \$905.25, if she does not pay the bill for two years, at a rate of 22.9%, what will she owe?

**Find the PRINCIPLE for each money item using  $A = p(r + 1)^t$ .**

9) Sarah invested some amount of money at a rate of 15% and had \$3498.01 after four years, what was the original amount?

10) Travis money and earned 9.5% for the past ten years and now totals \$13,612.34. What was the initial amount invested?

**Find the TIME for each money item using  $A = p(r + 1)^t$ .**

11) Jacob's savings, originally \$12,781.50, has been growing at  $6\frac{1}{2}\%$  and is now worth \$27,213. How long has it been invested?

12) McKalya has a \$25,000 nest-egg and has it in a long-term  $10\frac{9}{10}\%$  high-growth investment. How many years should it take to reach \$100,000 in value?

**The "Solving Complex Equations" quiz items are just like the next ten items here.**

13)  $4.26x + 11.53 = 37.69$

14)  $6(2x - 9.25) = 72.75$

15)  $\frac{6.5}{13} = \frac{x - 9}{5}$

16)  $x^2 + 11x + 30$

17)  $5^3 + 6x + \sqrt{625} = |-410| + \frac{210}{12}$

18)  $3.29\sqrt{x + 6} - 28.42 = 132.47$

19)  $4.85 \cdot 9^x - 45.7 = 347.15$

20)  $4.8 \cdot |x + 11.95| - 52.95 = 220.15$

21)  $\frac{98.5}{3x + 17.61} = \frac{38.83}{12.1x}$

22) When Rhonda collects pop cans after school she can usually find 90 cans in an hour. If she has an extra 25 minutes, how many pop cans should she be able to find?